

# Internal Selections Process at Washington University in St. Louis

## What is an Internal Selections Process?

A University-wide process for selecting one application to submit to a grant program. Funders can be foundations, industry, or federal agencies.

## Critical elements of an effective internal selections program:

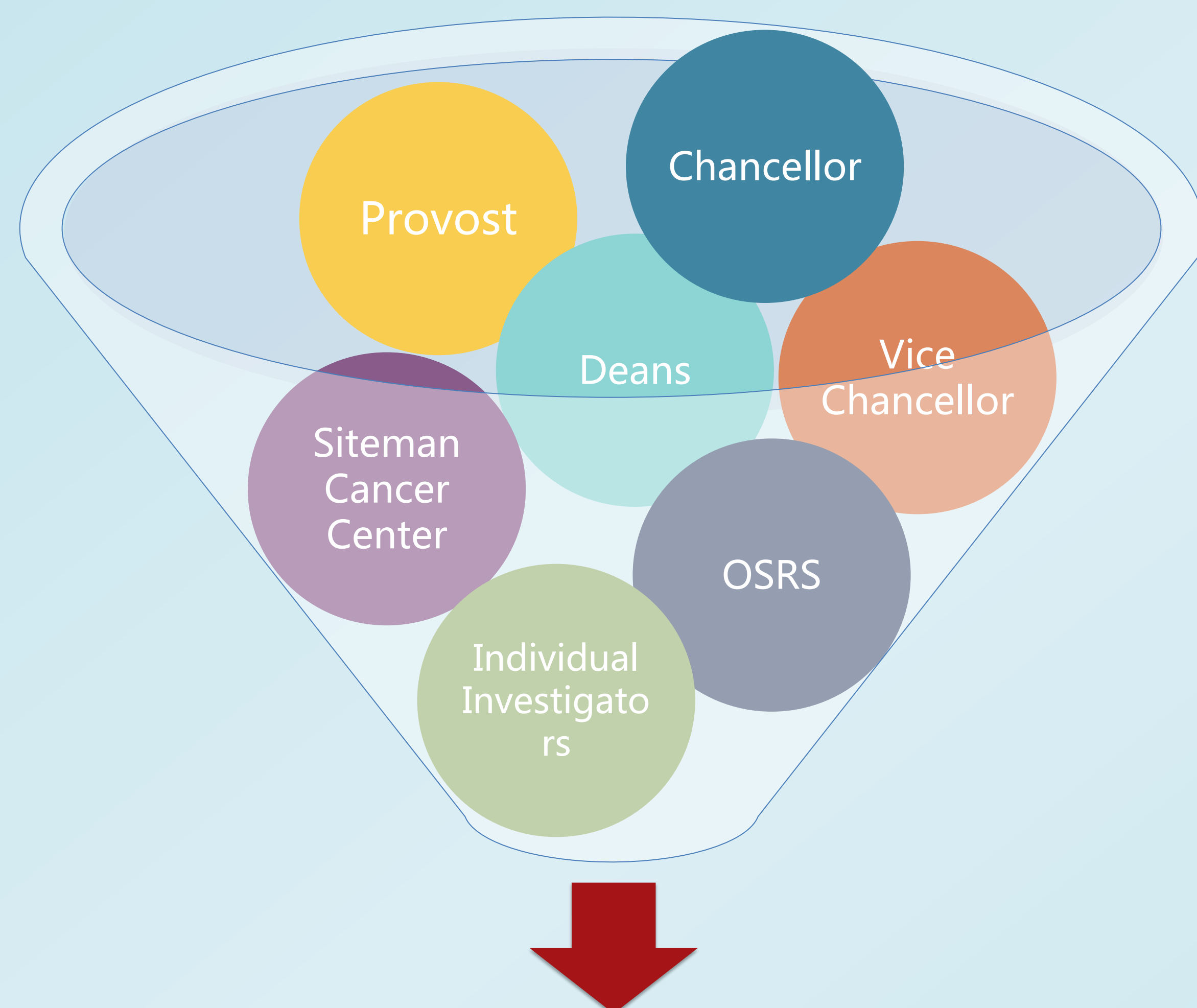
- Communication of opportunities and eligibility
- Selection committee formation
- Internal application adjudication and selection
- Candidate mentoring

## The aims are to:

- Assure clarity, consistency, transparency, trust
- Deliver effective communication to candidates and selection committee regarding the goals of the funders and characteristics of previous winners
- Improve the success rate of Washington University candidates

## Intake and Dissemination Process

- Maximize faculty awareness of and access to all research funding opportunities
- Establish a single website with all the information
- Preserve an advantageous timeline



**Vice Chancellor for Research**  
Uniform Distribution by Email



## Instructions for Internal Selection (for New Investigator Awards)

If you wish to be considered for this award, please forward the following materials for internal review:

1. WashU Internal Selection cover page
2. Biographical sketch
3. One page project description, including diagram
4. Letter of support from the department head

## New Investigator Award Review Criteria

- Innovation and novelty of the proposed project
- The likelihood of the foundation's scientific advisory board to select the candidate for the award
- The project's potential to change the future of science
- The presence of high-impact publications
- The candidate's potential to become a leader in their field

## Peer Review Committees

New Investigator Awards Committee  
Instrumentation Committee  
Cancer Committee  
ICTS Funding Program Committee  
Institute for Public Health  
Division of Biology and Biomedical Sciences (graduate student and postdoc Committee)  
Ad Hoc committees

## Catherine Determan

Funding Resources Coordinator  
314.747.1654  
cdeterman@wustl.edu  
research.wustl.edu